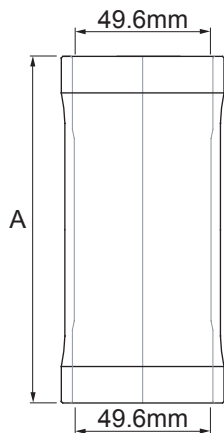


# 2010 Special Head Tube Spec and Head Set Setting



RS-7  
1-1/2 Traditional  
style Head Tube

A length  
S-120.65mm  
M-120.65mm  
L-133.35mm



Fork Steerer tube  
1-1/8 Traditional

ChrisKing  
1.5"Devolution  
#HSG1

CaneCreek  
XXcII

FSA  
orbit Z 1.5R

Fork Steerer tube  
1-1/2 Traditional

ChrisKing  
1.5"  
#HSE1

CaneCreek  
XXII

FSA  
orbit Xtreme Pro1.5

Fork Steerer tube  
1-1/8 Top 1-1/2 Bottom  
Tapered

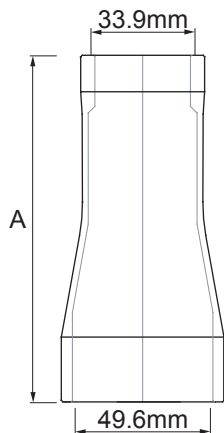
ChrisKing  
Top-1.5"Devolution /Bottom-1.5"  
#HSG1 + PHS625

CaneCreek  
Top-XXcII/Bottom-XXII

FSA  
Gravity1/DX Pro

2010 FXR  
1-1/8 Top  
1-1/2 Bottom  
FrustumTraditional  
style Head Tube

A length  
S-120.65mm  
M-120.65mm  
L-133.35mm



Fork Steerer tube  
1-1/8 Traditional

ChrisKing  
Top- 1-1/8" / Bottom-1.5"Devolution  
Tapered #HST1 + PHS625

CaneCreek  
Top- 1-1/8TR / Bottom-XXcII

FSA  
No20/No12BY

Fork Steerer tube  
1-1/8 Top 1-1/2 Bottom  
Tapered

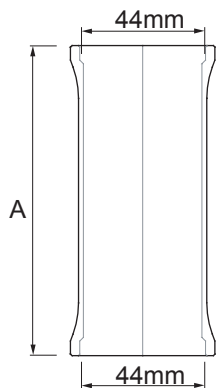
ChrisKing  
Top- 1-1/8" /Bottom-1.5"  
Tapered #HST1

CaneCreek  
Top- 1-1/8TR /Bottom-XXII

FSA  
No20/No12B

ProLite suspension  
1-1/8 ZeroStack  
style Head Tube

A length  
S-108mm  
M-120.65mm  
L-133.35mm



Fork Steerer tube  
1-1/8 Traditional

ChrisKing  
1-1/8 Inset  
#HSV1

CaneCreek  
ZS

FSA  
orbit Z